



Our Mission: "The Mosquito Range Heritage Initiative, through cooperative efforts, seeks to conserve unique natural areas, preserve historic & cultural sites, promote diverse recreation and develop community business opportunities."

Spring 2017



Find and order this "Altitude Improves Attitude" mug and all other MRHI merchandise on our new website.



Thank you to the SPNHA for their support of the MRHI Adventure Series!

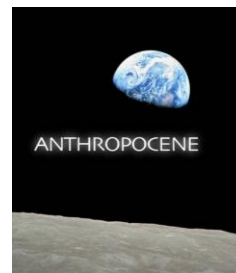


UPCOMING EVENTS

2018 MRHI Calendar Photo Submission Deadline, April 15
 Photo submissions may be emailed to calendar@mrhi.org or a CD may be mailed to: MRHI, PO Box 375, Alma CO 80420.
 Find more information on back.

2nd Annual Alma Mountain Film Festival, April 21
 All are welcome, and refreshments will be provided. Our feature film is "Anthropocene" and we will show several other short films. Entrance is free with a suggested donation. Anthropocene by Bullfrog Films examines the characteristics and implications new geological age, in which human growth and activity has shaped the physical and functional characteristics of the Earth.

JoAnn Dufty Memorial Scholarship Deadline, May 1
 The \$1000 award pays tribute to JoAnn Dufty (1931-2013) whose environmental interests made a lasting impression in Colorado and whose legacy now creates new opportunities for aspiring college students graduating from South Park High School. More information as well as the application can be found at <http://www.mrhi.org/scholarship.html>.

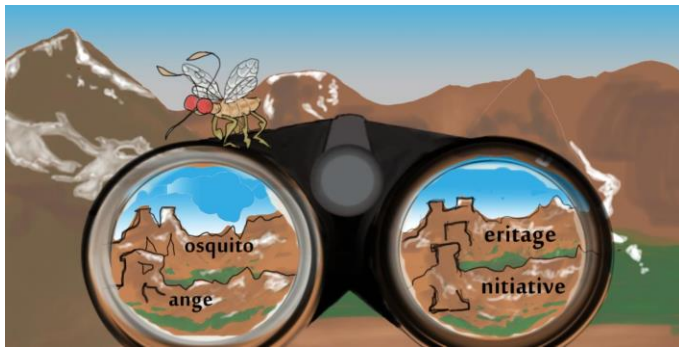


Outdoor Adventure Series – “Beaver: Nuisance or Opportunity?” with Sherri Tippie

Sherri Tippie, beaver re-homer and fanatic, spoke passionately about her favorite critter. She shared information about the characteristics and habits of beavers as well as her own self-taught journey to become the top live trapper of North America. With a great respect for this keystone species Sherri encouraged attendees to be informed about best practices when attempting to re-home beavers. Beaver Ponds Environmental Education Center and Sherri herself offered to be a point of contact for local beaver re-homing issues.

Along with enjoying the beaver passion and knowledge of Sherri Tippie, MRHI was very happy to partner with Beaver Ponds Environmental Education Center for this Adventure Series.

Whether you have been on an exciting adventure, know a useful skill, or have some interesting facts to share, the MRHI adventure series talks are a perfect way to share your experience and knowledge with the community in a small and intimate setting. Contact leahmlentz@gmail.com if you would like more information or are interested in presenting.



Volunteer of the Quarter: Kathryn Goettelman

We would like to recognize our volunteer of the quarter Kathryn Goettelman. As our first youth board member Kathryn has brought new energy to MRHI. Her thoughtful interactions with the public at Burro Days and Alma Festival in the Clouds demonstrated her passion for her backyard, why she volunteers for MRHI, and what about our mission resonated most with her.

She shared her exceptional artistic abilities and designed a new MRHI banner to be used at events and programs. The new perspective of our older logo was refreshing. In addition she was a reliable volunteer for many events including our Poker Glide and Poker Ride, dedicating weekends for a cause she believes in shows her true colors, as beautiful as the mountain wildflowers.

As a native of the Mosquito Range Kathryn emanates both the strength and artistic beauty of the mountains. We look forward to incorporating her valuable perspective regarding the future of the organization and her backyard as we update our master plan. MRHI is honored to work with the next generation of environmental stewards and Kathryn is leading the way.





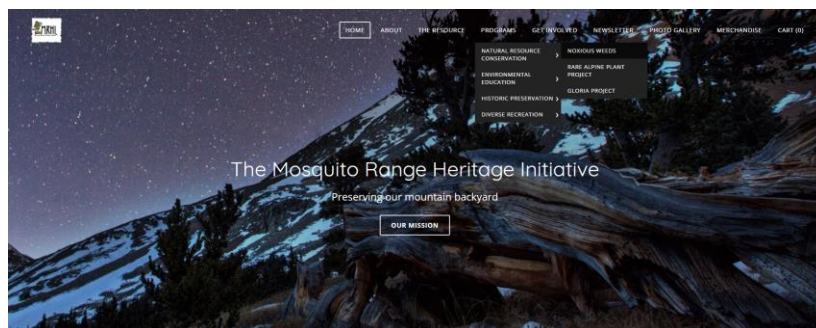
What a lovely day for a Poker Glide!

2017 saw MRHI's 10th Annual Poker Glide Family Ski and Snowshoe. Participants came out on March 11th to enjoy snow and sunshine on Buckskin Rd while competing for prizes for best and worst poker hands. It was a beautiful day to enjoy the mountains and visit the historic Paris Mill.

We would especially like to thank the South Park National Heritage Area for allowing the Poker Glide to tour around the Paris Mill property and for lending us their restoration information displays to show at the lunch. A big thank you to Jara Johnson for organizing and running this event, to Dean and Kathy Butler for donating prizes, and to all of our volunteers for making it possible. We hope to see you all in September for the Poker Ride!

New MRHI Website

MRHI has launched our new website at <http://www.mrhi.org>. We would like to send a huge thanks to Jara Johnson for working so hard to create this new website, and we cannot thank Tim Balough enough for generously maintaining the MRHI website for so many years!



MRHI 2018 Calendar Photo Submission

Calling For Your Photos!

The Mosquito Range Heritage Initiative is seeking submissions of photographs taken in the Mosquito Range (extending from Hoosier Pass to Weston Pass and from Highways 9 and 285 to the ridgeline of the peaks). Thirteen great photos will be chosen to create our 2018 fundraiser calendar. A photographer whose photo is chosen will receive a MRHI membership and a free calendar.

Preference will be given to photos that promote our mission of working to conserve unique natural areas, historic and cultural sites, and to promote diverse recreation and community business opportunities within the Mosquito Range.

GUIDELINES

Photographers are asked to submit their entries as digital files. All digital files must be 10 MB or smaller, and must be in JPEG or JPG format. Photos should be high resolution of at least 300 DPI with dimensions of 8x11 inches landscape/horizontal. Typically this requires an 8 megapixel or better camera. Please don't downsize files any more than necessary to meet the 10 MB file size.

With your photo submission please include the title and location of the photo, your name, address, and phone number.

Photo submissions may be emailed to calendar@mrhi.org or a CD may be mailed to: MRHI, PO Box 375, Alma CO 80420.

Please submit your photos by **April 15, 2017**.

Cost of submission is \$5/photo, \$10/3 photos or \$25/10 photos. Please make checks payable to MRHI with a notation that it is a calendar photo submission.

RULES

No photos will be considered outside our study area of the Mosquito Range.

The photos needs to be in landscape mode or horizontal mode (**NO SQUARES**).

If a check is received for photos outside the study area, the money will NOT be returned but instead be considered a donation.

If we do not receive the check by May 10, 2017, submitted photos will not be considered.

LICENSE

By submitting a photo, all entrants grant an irrevocable, perpetual, nonexclusive license to MRHI, to reproduce, distribute, display, and create derivative works of the entries (along with a name credit) in connection with the photo submission and promotion of the photo submission, in any media now or hereafter known.

Support MRHI, become a Member!

To become a MRHI member, you can either visit our website at www.mrhi.org or request a membership slip and mail it back to us at PO BOX 375, Alma, CO 80420. *Thank you for your support!*

Membership levels: Basic - \$25; Family - \$60; Youth - \$10; Business - \$100; Corporate - \$250.

Don't forget these free ways to support MRHI:

Amazon Smile:

Amazon Smile donates 0.5% of purchases to the nonprofit of your choice. Amazon Smile has the same merchandise as amazon.com and it is free to sign up.

iGive:

When you shop online at over 1,500 stores, a percentage of your purchase can be donated to MRHI by clicking on the iGive Button. You don't pay more, but still raise money for your cause.

Goodshop & Goodsearch:

Goodsearch: Search the Internet with the patent-protected, Yahoo!-powered search engine (just like you'd search on any other search engine), and Goodsearch will donate about a penny for nearly all searches to your selected cause.

Goodshop: Shop at one of more than 2,800 participating stores (from Amazon to Zazzle) and a percentage of what you spend will be donated to your cause at no cost to you.

Contact Us!



PO BOX 375
Alma, CO 80420
719.836.0964
info@mrhi.org
www.mrhi.org